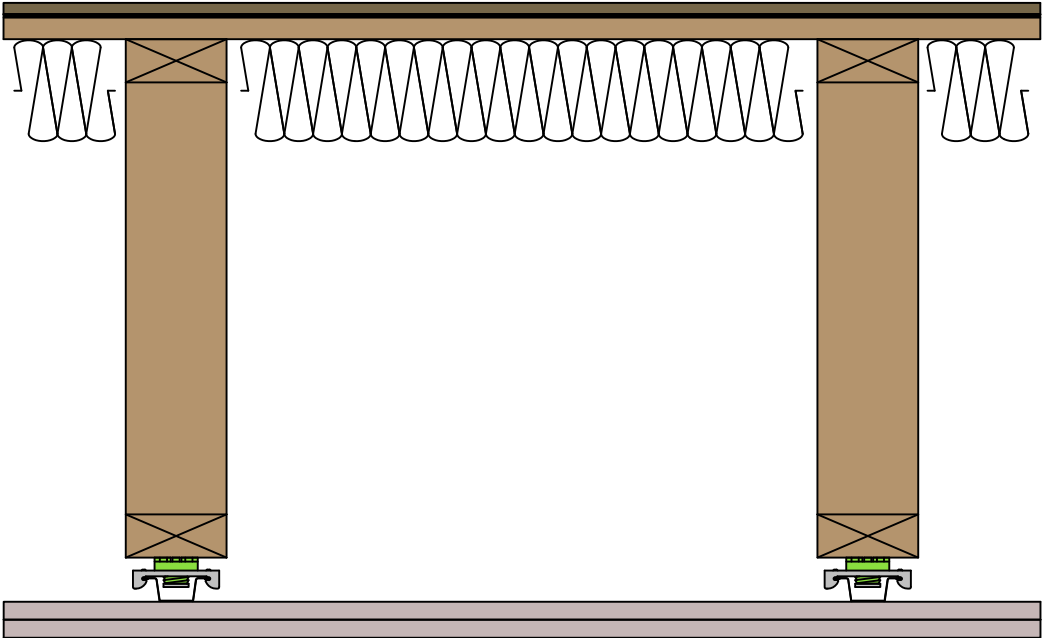


STC  
60

IIC  
55

**Assembly**

- Bamboo Flooring, 3/8" (10mm)
- Sonus Core 3, 1/8" (3mm)
- OSB, 3/4" (19mm)
- Open Web Truss, 18" (457mm)
- SonusClip Ceiling



**Contact**

**REGUPOL America LLC**  
11 Ritter Way  
Lebanon, Pennsylvania 17042  
UNITED STATES OF AMERICA  
www.regupol.com

**Notes**

Adjacent trades are only shown schematically and in parts. The applicability and other conditions or constraints need to be checked by the customer or user on their own responsibility. The technical data sheets, installation instructions and local conditions need to be considered.

**Acoustical Test Assembly**

Test Report no.: H6848.02-303-11-R0

Test Report no.:

Drawn by: DLG

Test Date: 11.15.2017

Scale: N/A

DWG no.: 1