



**REGUPOL sonusclip** is designed to reduce sound transmissions from both airborne and impact noise in wood, steel or concrete construction for both interior walls and ceilings. The **sonusclip** system is used to attach gypsum wall board (GWB) for walls and ceilings that allows the GWB to float and absorb energy due to the resilient rubber isolators, causing an increase in the acoustic performance for both STC (airborne) and IIC (impact) ratings. Each **sonusclip** has a design load rating of 36 lbs. per isolator, the **sonusclip** can support up to two layers of 5/8" gypsum board when spaced no more than 24" x 48" on-center.

REGUPOL SONUSCLIP – SOUND ISOLATION CLIP SPEC’S

Design load:	36 lbs. per clip
Recycled content:	Yes
VOC treated:	Yes
Total Deflection:	3mm
Adjustable:	No
Use on walls:	Yes
Use on ceilings:	Yes
UL fire tested:	Yes

Please contact us for detailed testing information and product data.

[acoustics@regupol.com](mailto:acoustics@regupol.com) [www.regupol.com/acoustics](http://www.regupol.com/acoustics)



If you have questions during installation please contact **REGUPOL** at 717-675-2190

## Interior Wall Assemblies



**Framing:** 2 x 4 Wood Stud, 16" o.c.  
**Insulation:** 3-1/2" Fiberglass  
**Isolation:** None – direct applied  
**Side 1:** 5/8" Gypsum Wall Board  
**Side 2:** 5/8" Gypsum Wall Board



**Framing:** 2 x 4 Wood Stud, 16" o.c.  
**Insulation:** 3-1/2" Fiberglass  
**Isolation:** sonusclips with Hat Channel  
**Side 1:** 5/8" Gypsum Wall Board  
**Side 2:** 5/8" Gypsum Wall Board



**Framing:** 2 x 4 Wood Stud, 16" o.c.  
**Insulation:** 3-1/2" Fiberglass  
**Isolation:** sonusclips with Hat Channel  
**Side 1:** Two 5/8" Gypsum Wall Boards  
**Side 2:** 5/8" Gypsum Wall Board



**Framing:** 3-5/8" Steel Studs, 20 Gauge, 16" o.c.  
**Insulation:** 3-1/2" Fiberglass  
**Isolation:** None – direct applied  
**Side 1:** 5/8" Gypsum Wall Board  
**Side 2:** 5/8" Gypsum Wall Board



**Framing:** 3-5/8" Steel Studs, 20 Gauge, 16" o.c.  
**Insulation:** 3-1/2" Fiberglass  
**Isolation:** sonusclips with Hat Channel  
**Side 1:** 5/8" Gypsum Wall Board  
**Side 2:** 5/8" Gypsum Wall Board

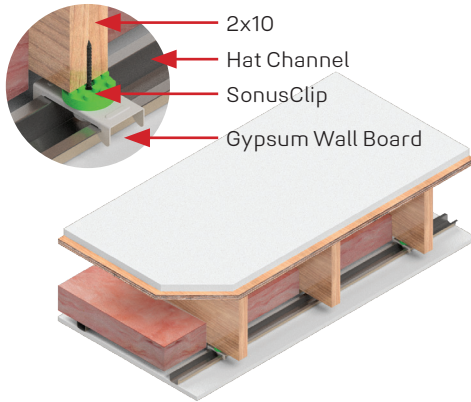


**Framing:** 3-5/8" Steel Studs, 20 Gauge, 16" o.c.  
**Insulation:** 3-1/2" Fiberglass  
**Isolation:** sonusclips with Hat Channel  
**Side 1:** Two 5/8" Gypsum Wall Boards  
**Side 2:** 5/8" Gypsum Wall Board

Regupol America, LLC is a product manufacturer and does not represent itself as a consultant, engineer, or advisor in construction methods, standards, and compliance. Therefore, Regupol America only warrants its products under its standard limited warranty (available by request), and does not represent or warrant any advice, suggestions, instructions, whether formal or informal, oral or written, in conjunction with any sales of its products. Any such advice is not intended for a particular purpose and should not be acted or relied upon as such. Any such advice is not represented as being all-inclusive, correct, complete or up-to-date. The information and data contained herein are based on industry accepted testing, manufacturing tolerances and prior product usage as set forth. It is intended as descriptive of the performance characteristics and capabilities of Regupol/Regufoam and does not certify applicability for any particular or specific project. Technical assistance, calculations and design recommendations are available from Regupol America, and are subject to terms and conditions provided upon request.

## Floor-Ceiling Assemblies

### 2 x 10 Wood Construction



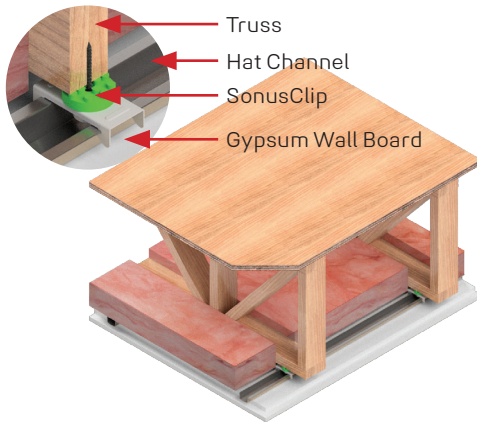
- Floor:** 1" Gypsum Topping  
3/4" Plywood
- Framing:** 2 x 10, 16" o.c.
- Insulation:** 3 1/2" Fiberglass
- Isolation:** **sonusclips** with Hat Channel
- Ceiling:** 5/8" Gypsum Wall Board

### ACOUSTICS

Floor Covering	Underlayment	IIC / STC
Bare - just clips	None	IIC 51 / STC 60
Hardwood	None	IIC 56 / STC 60
Hardwood	<b>sonus core 3 &amp; sonus core 5</b>	IIC 58 / STC 59
Hardwood	<b>sonus core 10</b>	IIC 60 / STC 60
Tile	<b>sonus core 5</b>	IIC 55 / STC 61
Vinyl	None	IIC 55 / STC 61

\*additional acoustic tests available at [regupol.com/acoustics](http://regupol.com/acoustics) or call us 717 675 2190

### 18" Open Web Construction



- Sub-floor:** 3/4" Plywood
- Framing:** 18" Open Web Truss, 24" o.c.
- Insulation:** 3 1/2" Fiberglass
- Isolation:** **sonusclips** with Hat Channel
- Ceiling:** Two 5/8" Gypsum Wall Boards

### ACOUSTICS

Floor Covering	Underlayment	IIC / STC
Hardwood	None	IIC 53 / STC 60
Hardwood	<b>sonus core 3 &amp; sonus core 5</b>	IIC 55 / STC 60
Hardwood	<b>sonus core 10</b>	IIC 55 / STC 60
Tile	<b>sonus core 5</b>	IIC 58 / STC 60
Vinyl	None	IIC 53 / STC 60

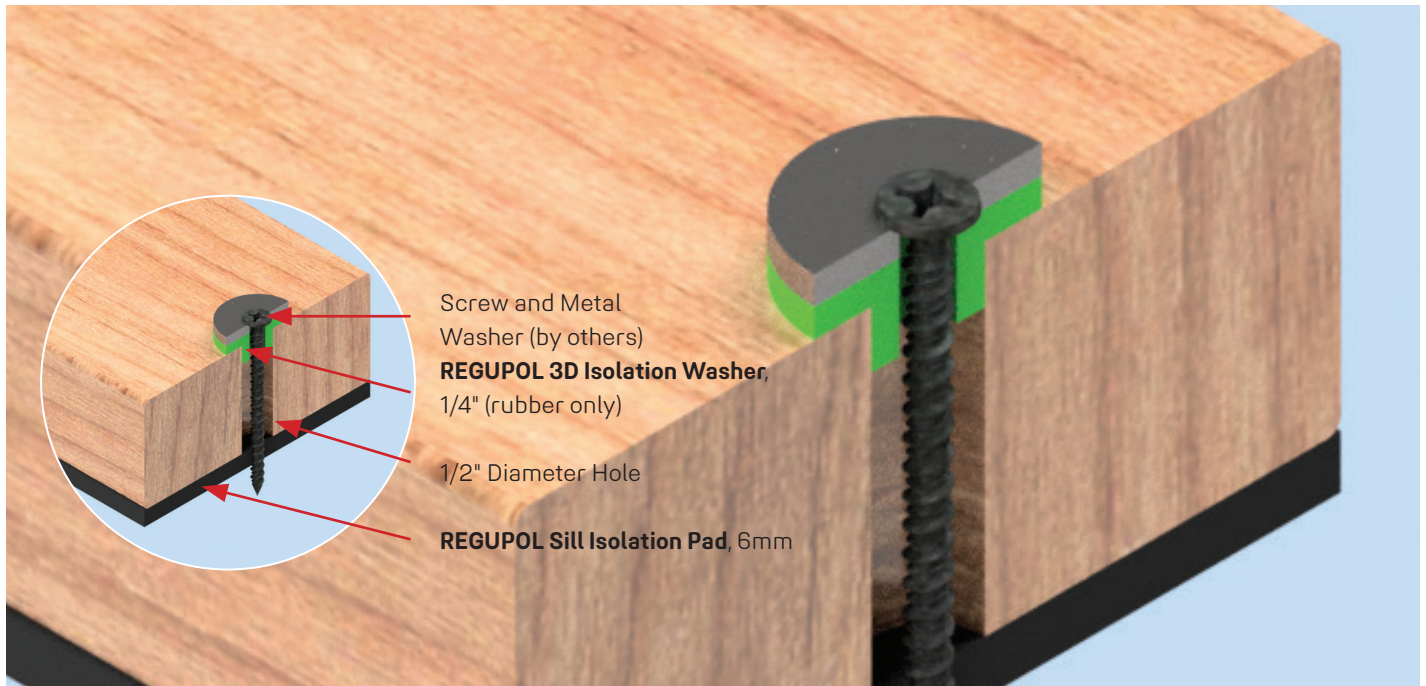
\*additional acoustic tests available at [regupol.com/acoustics](http://regupol.com/acoustics) or call us 717 675 2190

### Good to know:

Technical documentation for all **REGUPOL** acoustic solutions can be found at [www.regupol.com/us/acoustics](http://www.regupol.com/us/acoustics).  
acoustics@regupol.com +1 800 537 8737



## Product Accessories



**3D Isolation Washer**



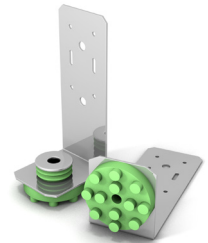
**Sill Isolation Pad**



**REGUPOL Sonus**



**SonusClip DE90**



**REGUPOL SonusClip**

