

# TECHNICAL DATA

## REGUPOL SONUS CURVE 15



### Product

High performance impact and airborne sound insulating underlayment for various floor structures under screed beds and floating floors.



### Material

- PUR-bonded recycled rubber fibres
- Dimpled profile on the underside

### Weight

6.0 kg/m<sup>2</sup>

### Dimensions

Length: 15,000 mm, Width: 1,150 mm, Thickness: 15 mm

### Applications

Under cement or gypsum screed beds, concrete or timber toppings and other floating floor solutions for both residential and commercial use, e. g. cinemas, theatres or mechanical rooms.

### Certification

GreenCircle certified for recycled content and can potentially qualify for up to 8 LEED points.

**Cradle to Cradle Certified®** is a registered trademark of the Cradle to Cradle Products Innovation Institute (C2CPII).



| Acoustical Performance*  | Standard   | Result   |
|--|--|--|
| Under concrete:  |  |  |
| 100 mm reinforced concrete,<br><b>REGUPOL sonus curve 15</b> ,<br>140 mm concrete slab | DIN EN ISO 10140-3<br>DIN EN ISO 717-2<br>ASTM E492-09<br>ASTM E989-06 | $\Delta L_w \geq 26$ dB<br>IIC 59 ( $\Delta IIC$ 30) |
|  | DIN EN ISO 10140-1<br>DIN EN ISO 717-1<br>ASTM E413-10<br>ASTM E90-09  | $R_w$ 64 dB<br>STC 64                                |

\*Assembly from top to bottom

| Material properties          | Standard       | Result                           |
|------------------------------|----------------|----------------------------------|
| Maximum surface load         |                | 50 kN/m <sup>2</sup>             |
| Mean dynamic stiffness value | DIN EN 29052-1 | $s'_t \leq 18$ MN/m <sup>3</sup> |
| Compressibility              | DIN EN 12431   | $c \leq 1.5$ mm                  |

# TECHNICAL DATA

## REGUPOL SONUS CURVE 15

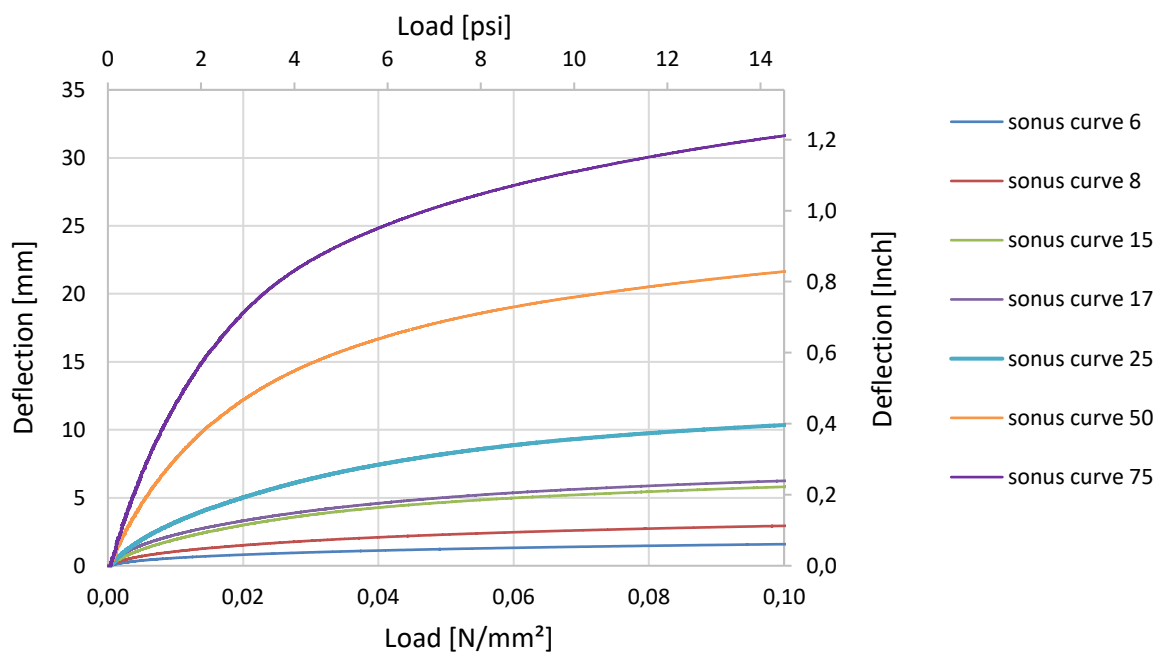


| Thermal behaviour      | Standard     | Result                                    |
|------------------------|--------------|---|
| Thermal conductivity   | DIN EN 12667 | $\lambda = 0.075 \text{ W}/(\text{mK})$   |
| Thermal resistance     | DIN EN 12667 | $R = 0.14 \text{ (m}^2\text{K)}/\text{W}$ |
| Temperature resistance |              | -20 to +60° C                             |

| Fire behaviour      | Standard       | Result |
|---------------------|----------------|--------|
| Fire classification | DIN EN 13501-1 | E      |

| Health protection | Standard     | Result  |
|-------------------|--------------|---|
| VOC               | DIN EN 16516 | compliant with EU-LCI list and German AgBB scheme;<br>"A+" as per décret n°2011-321 |
| Nitrosamine       | DIK Method   | compliant with German Model Building Regulation                                     |
| PAH               | DIN EN 18287 | compliant with German Model Building Regulation                                     |

### Physical data - Deflection



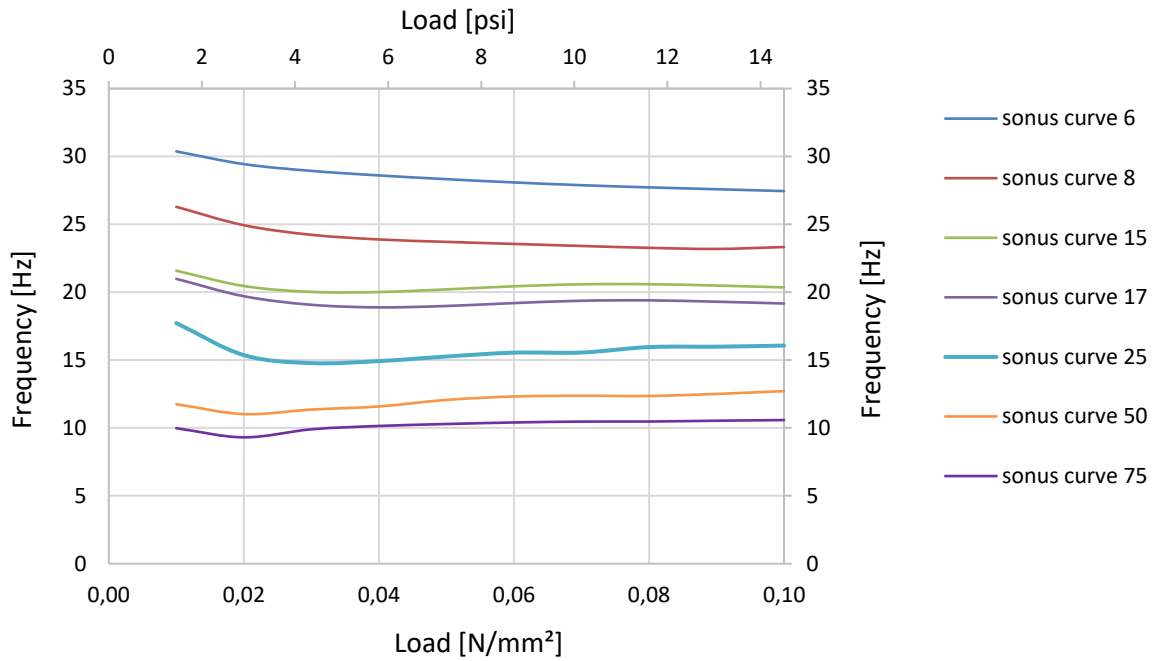
Test results as per test report 07-2019 conducted by Technical University of Dresden, Germany

# TECHNICAL DATA

## REGUPOL SONUS CURVE 15

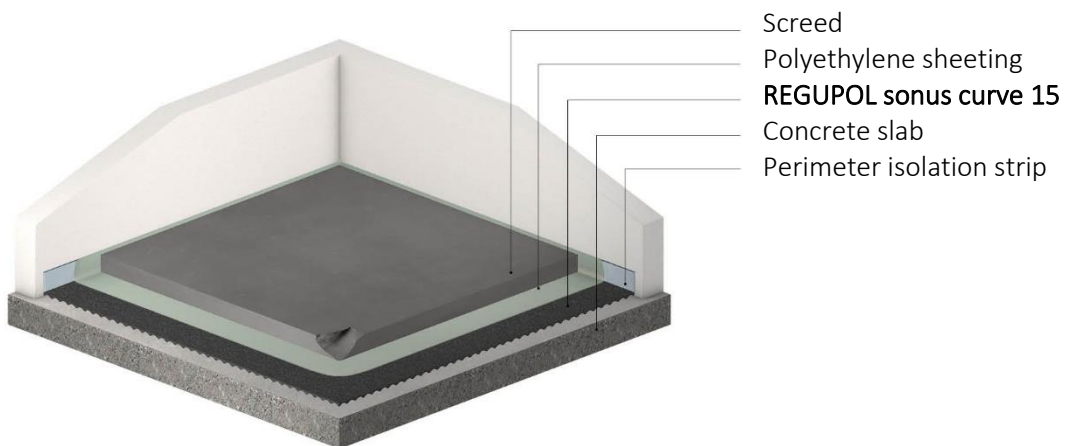


### Physical data – Natural frequency



Test results as per test report 07-2019 conducted by Technical University of Dresden, Germany

### Floor Assembly



For more assemblies and acoustic test reports, please visit [www.regupol.com](http://www.regupol.com).