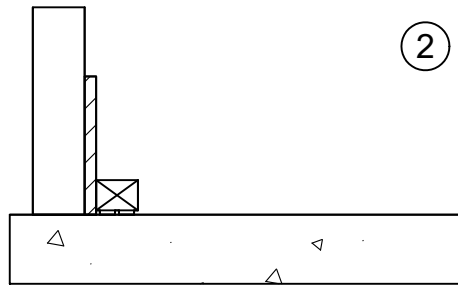
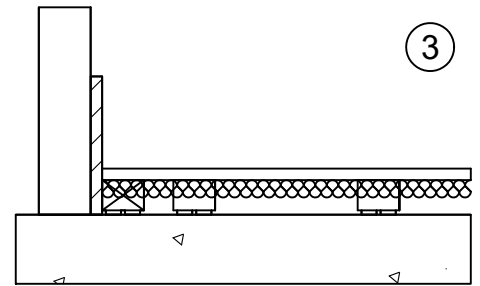


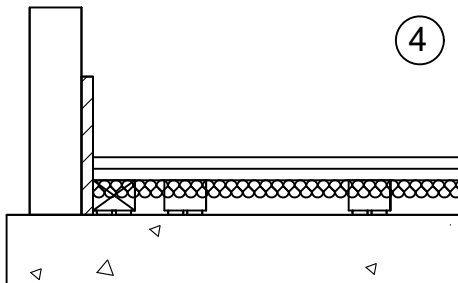
1
Tape or glue **REGUPOL perimeter isolation strips** in place, continuously on all adjoining structural elements, such as walls, columns, and protrusions.



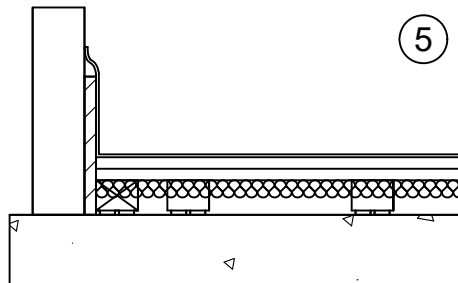
2
Place **REGUPOL soundpads** butt-joined to the perimeter of the room, around all structural elements. Individual **soundpads** should be spaced equal to or less than 16".



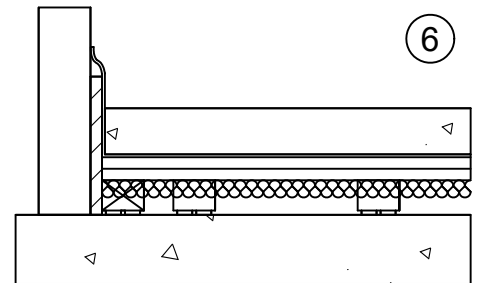
3
Place the first row of **soundpanels** starting in one corner of the room. Start the next row of **soundpanels** offset by 16". Cut the first **soundpanel** of every other row, then continue with full panels.



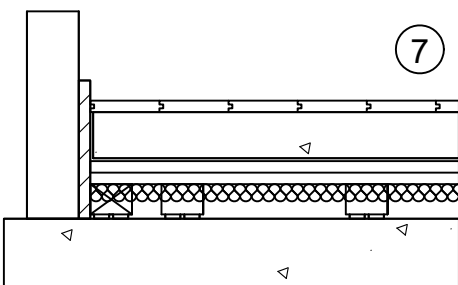
4
Install 2nd layer of 1/2" OSB or plywood over top of **soundpanel**, staggered, so that the seams do not line up. Glue and fasten with trowel, wood glue, 1" screws, 6" o.c. along perimeter, and 8" o.c. throughout.



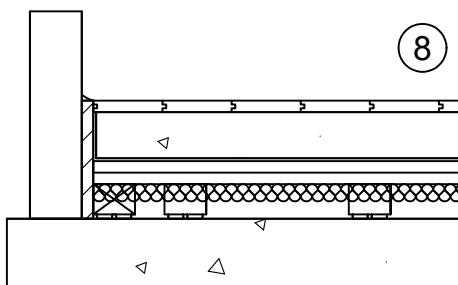
5
Cover the floor and **perimeter isolation strips** completely with 10-mil poly sheeting. Seams of sheeting should overlap by at least 4". Tape all seams to prevent concrete from leaking through.



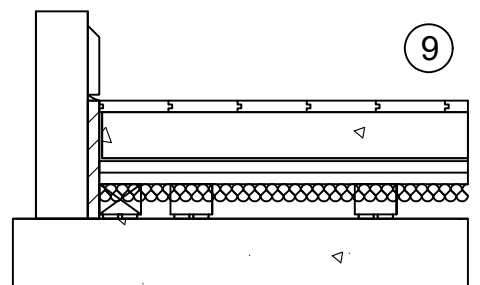
6
Place reinforcement and pour floating slab in place as per project design and specification.



7
After the concrete has cured, remove excess poly sheeting and install finish flooring as recommended by the flooring manufacturer.



8
Trim excess **perimeter isolation strip** at or below the level of the finish flooring. Caulk using an acoustical sealant.



9
Leave a slight gap between the baseboard and the finished floor. Avoid any rigid connections between the isolated floating floor and adjacent structural elements.

Contact

REGUPOL America LLC
11 Ritter Way
Lebanon, Pennsylvania 17042
UNITED STATES OF AMERICA
www.regupol.com

Notes

Adjacent trades are only shown schematically and in parts. The applicability and other conditions or constraints need to be checked by the customer or user on their own responsibility. The technical data sheets, installation instructions and local conditions need to be considered.

Project:

Project no.:

Detail: REGUPOL soundpanel Installation

Drawn by: DLG

Date: 4.13.2021

Scale: N/A

DWG no.: 1