

REGUPOL

IMPACT SOUND

CONTROL UNDERLAYMENTS



CREATING COMFORTABLE LIVING & WORKING SPACES



The products in the **REGUPOL sonus** range are characterized by their outstanding quality and durability, superior sound dampening, and long-term performance. Any floor covering can benefit from a **REGUPOL** underlayment, including:

- Hardwood and Engineered Hardwood flooring
- Tile and Stone
- Carpet and Carpet Tile
- Concrete
- VCT
- LVT

Unwanted noise or vibration can be debilitating. At **REGUPOL**, we specialize in manufacturing acoustical solutions that deliver comfort. They can be found everywhere in our living spaces and our daily life: in buildings, transportation, infrastructure, fitness centers, and in many industrial applications. As a partner with decades of experience and a broad portfolio of acoustical products, we will support you in finding the right solutions to control noise and vibration.

Each impact sound control underlayment—**REGUPOL sonus core**, **curve**, or **multi**—enables you to create the ideal acoustic environment. They are engineered, manufactured, and tested to reduce impact noise under a wide variety of resilient and hard surface floor coverings, resulting in quieter living spaces. The **REGUPOL sonus** range includes both smooth and profiled versions in numerous thicknesses and varying percentages of recycled content. Our product versatility, flexibility and know-how are precisely why acousticians, architects, engineers, and developers trust and rely on **REGUPOL** for noise and vibration control.

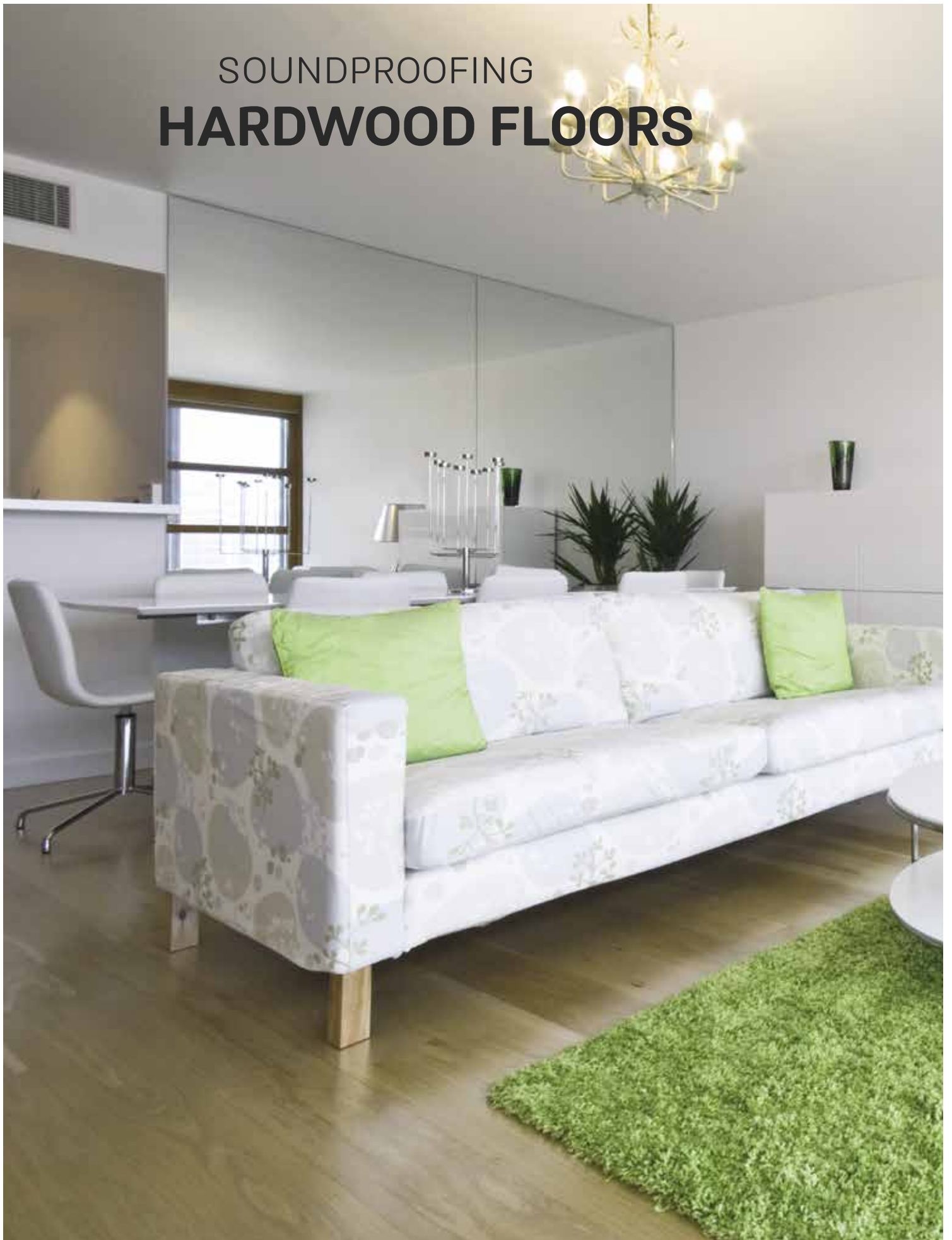
Let's create quiet spaces together.

WHY REGUPOL IMPACT SOUND CONTROL?

REGUPOL is a trusted name and a world-renowned leader in sound and vibration isolation. We offer flexible and economical solutions that allow you to plan your projects reliably. Whether it is the refurbishment or the design of new buildings, we provide solutions that comply with standards and deliver the best sound experience based on science and proven acoustical engineering practices.



SOUNDPROOFING **HARDWOOD FLOORS**



REGUPOL SONUS CORE

REGUPOL sonus core impact sound underlayments are installed under resilient and hard surface floor finishes like ceramic tile, stone, carpet, bamboo, and hardwood flooring to reduce noise and lessen the sound of impact throughout buildings. Made from 89% recycled rubber content, the **REGUPOL sonus core** portfolio available in 2mm, 3mm, 5mm, 6mm, 10mm, or 12mm cuts noise from walking traffic to the floors below, making for a quieter workplace or peaceful home.

Each **REGUPOL sonus core** acoustic underlayment delivers proven lab and field-tested results with acoustic ratings up to STC 66, IIC 74, Delta IIC 27 depending on the floor covering and floor-ceiling assembly.

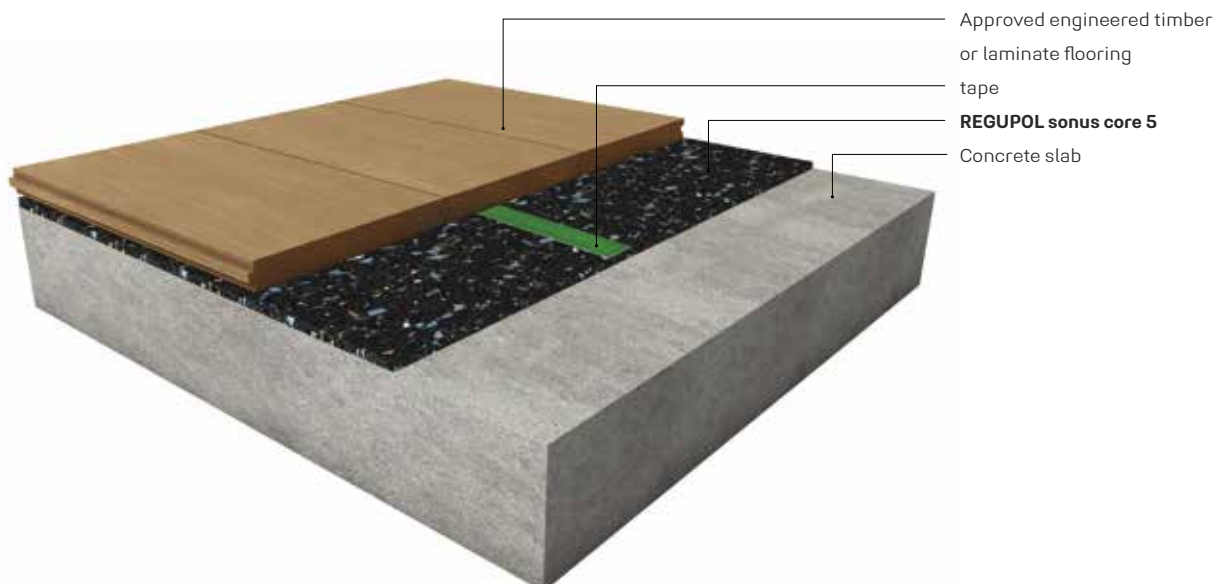
Available in:

Rolls/Sheets	Vary by thickness
Thickness	2mm, 3mm, 5mm, 6mm, 10mm, 12mm

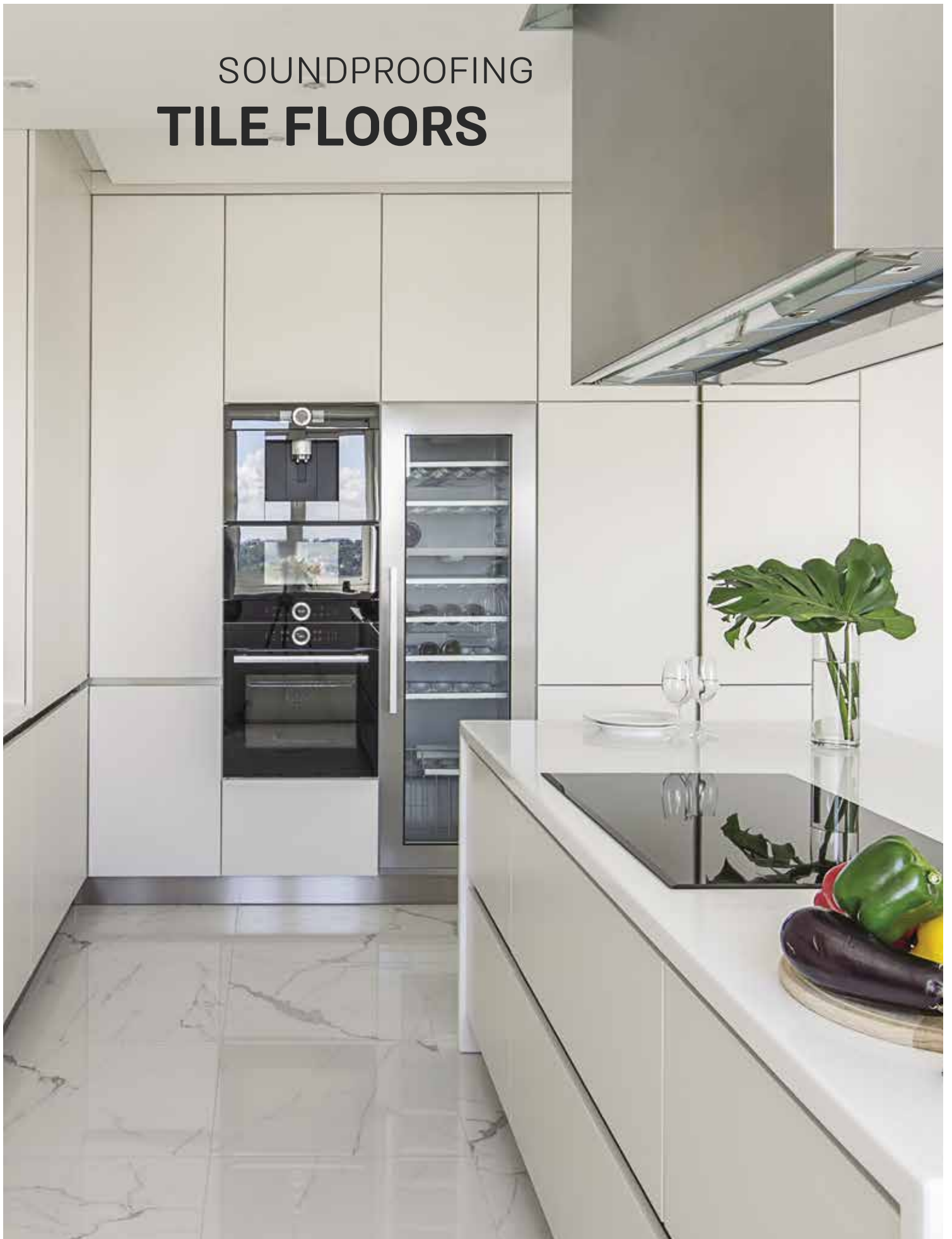


The REGUPOL sonus impact sound underlayments are high-performance acoustic underlayments designed to reduce the passage of impact transmission caused by people walking and can be installed under ceramic tile & stone, carpet & carpet tile and hardwood flooring.

- Greatly reduces sound transmission of impact noise
- Sustainable building product made from 89% post-consumer recycled rubber
- Backed by independent laboratory and field tests
- GreenCircle certified and can potentially qualify for up to 8 LEED points
- Applicable for a wide range of floor coverings
- Easy installation
- Approved by the Tile Council of North America



SOUNDPROOFING **TILE FLOORS**



REGUPOL SONUS CURVE

Made of 92% recycled tire rubber, **REGUPOL sonus curve** underlayment is engineered, manufactured, and tested to reduce the transmission of impact sound generated by footfall noise. Durable, versatile, and cost-effective are the main characteristics to describe this dimpled flooring underlayment. Various thicknesses let you design many different floor constructions to reduce impact and airborne sound transmission within building structures. **REGUPOL sonus curve** is perfectly suited for commercial and residential buildings underneath hardwood, concrete, screed, and floating floor systems.

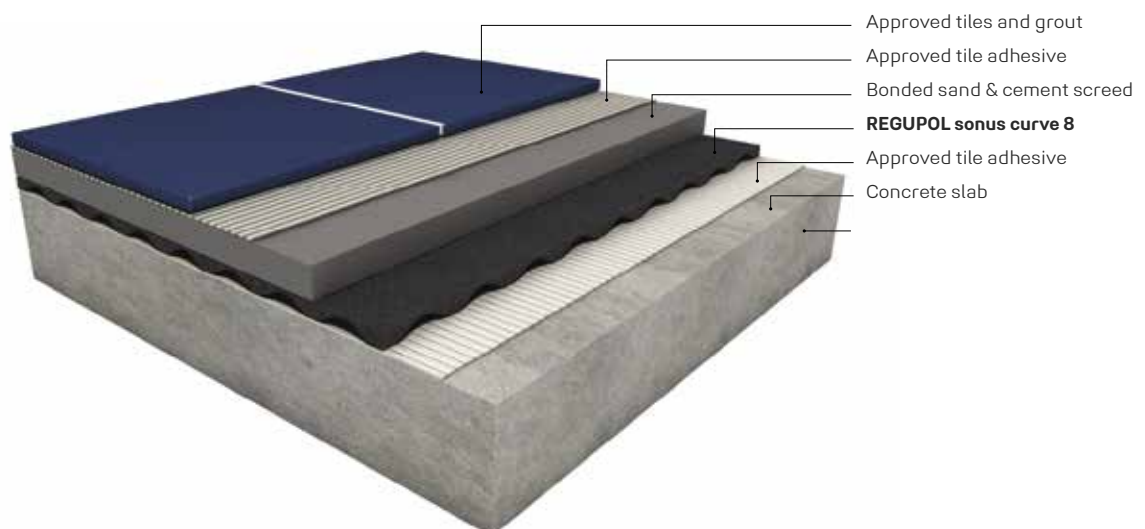
Available in:

Rolls	4' x 25' – 100 sqft/roll
Thickness	6mm, 8mm, 10mm, 17mm, 25mm



REGUPOL sonus curve impact sound underlayments are high-performance acoustic underlayments designed to reduce the passage of impact transmission noise and can be installed under lightweight concrete or topping as well as a plywood raft system.

- Greatly reduces sound transmission of impact noise
- Sustainable building product made from 92% post-consumer recycled rubber
- Backed by independent laboratory and field tests
- GreenCircle certified and can potentially qualify for up to 8 LEED points
- Applicable for a wide range of floor coverings



SOUNDPROOFING
RESILIENT FLOORS



REGUPOL SONUS MULTI

REGUPOL sonus multi is a factory sanded acoustic underlayment made from pre-consumer polyurethane foam and cork elastomer, making it ideally suited for use underneath sheet vinyl, luxury vinyl plank (LVP) and tile (LVT), carpet, carpet tile, and more.

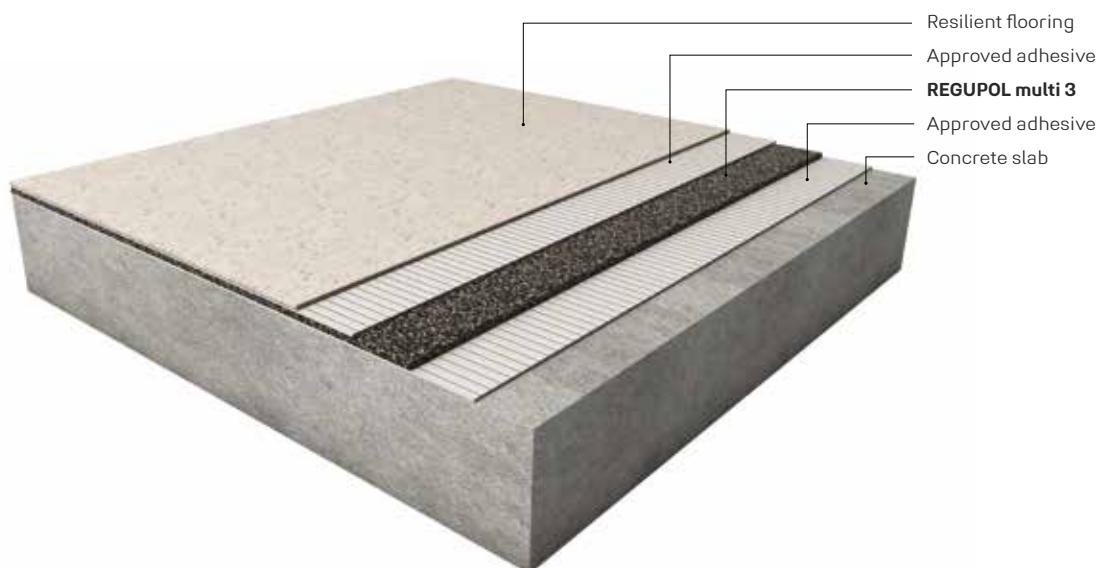
Available in:

Rolls	39" x 65'-6" – 212 sqft / roll
Thickness	3mm



REGUPOL sonus multi impact sound underlayments have been specifically engineered and manufactured to reduce the passage of impact transmission caused by people walking and can be installed under vinyl plank (LVT), sheet vinyl, carpet & carpet tile.

- Greatly reduces sound transmission of impact noise
- Sustainable building product made from 89% post-consumer recycled content
- Backed by independent laboratory and field tests
- GreenCircle certified and can potentially qualify for up to 8 LEED points
- Applicable for a wide range of floor coverings





HOW ARE SOLUTIONS EASY AND INSPIRING? **TOGETHER**

We've got it covered.

REGUPOL is more than sports and multi-purpose surfaces. More than our acoustic underlayments. And more than our state-of-the-art track and field surfaces. For over 65 years, providing solutions and delivering exceptional customer service has been our business. We understand that paying attention to the details is critical from the start of any project. Making changes later means inconvenience and additional expenses. We sweat those details so you don't have to.

Because we invented the technology to recycle tires into unique products, you benefit from decades of experience and expertise that only we can offer. That means the right information, advice, and answers when you need them, along with products that have been refined, tested, and retested over the years by our R&D team to deliver precision performance that will not disappoint. It is all accomplished with manufacturing that meets the highest quality standards with the strictest environmental requirements.

Delivering results, developing leaders worldwide

We have grown steadily since 1954 – new products developed, new subsidiaries established and new locations added. Today, **REGUPOL** is still a family enterprise, with third and fourth generations currently working in company management. We have eleven offices in seven countries, all serving as epicenters for innovation, ingenuity, and community.

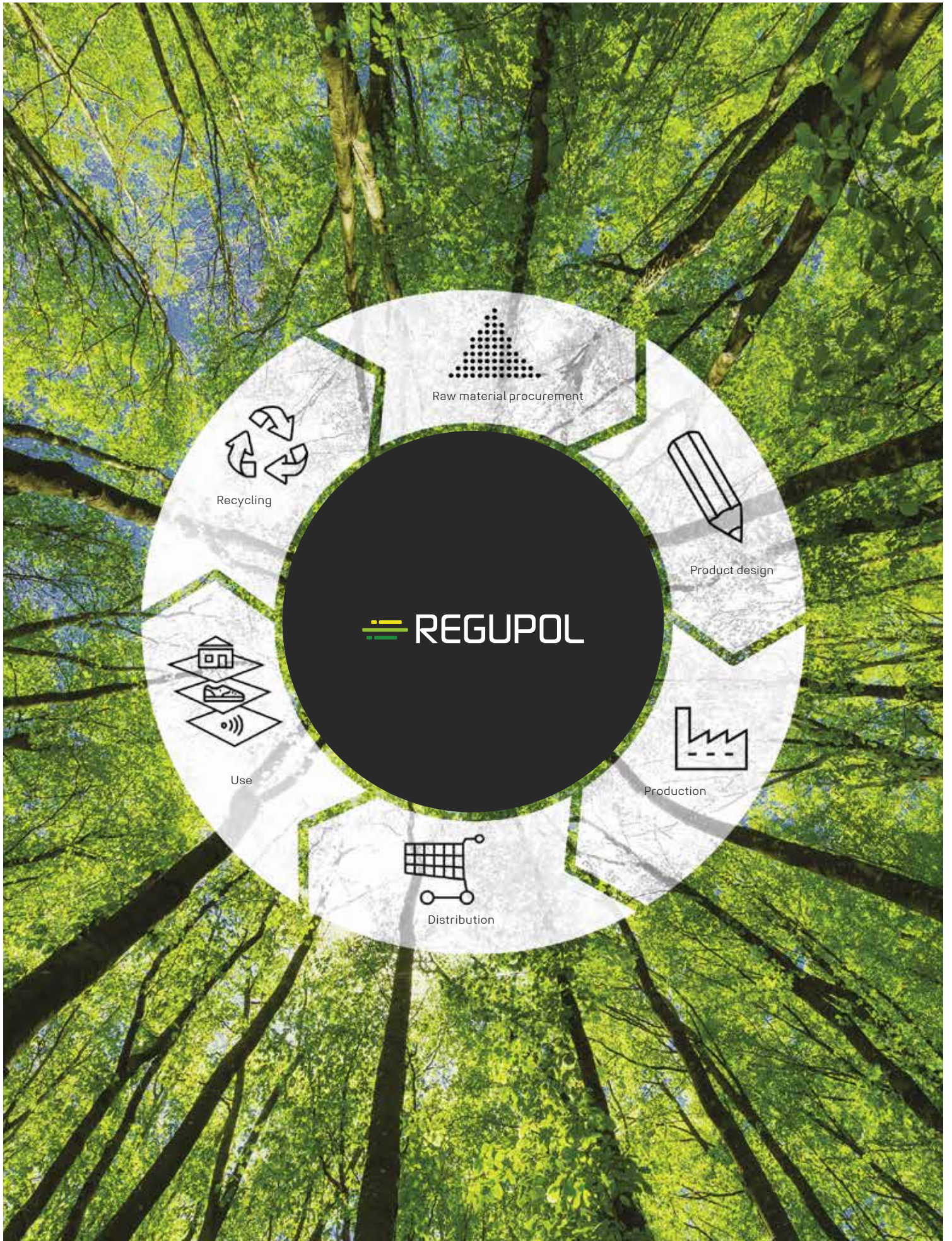
Behind every **REGUPOL** product, there is a talented team that works together, across the globe, to create performance solutions from reclaimed materials that deliver durability and protection where you need it most without sacrificing sustainability. Whether used to protect surfaces and optimize load transport or to dampen sound and vibration, **REGUPOL** gets it done. We deliver with a level of product, customer service, and investment that only the inventor can offer.

No matter the customer—we aim to make their experience easy and inspiring, at an only-at-**REGUPOL** value.

Customer service excellence for over 65 years.



Ask our experts about the optimal
Solution for your project:
sales@regupol.com | +1 800 537 8737

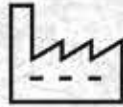


Raw material procurement

Recycling



Product design



Production



Distribution



Use

REGUPOL

HOW TO ACT MORE SUSTAINABLE? TOGETHER

Caring about the environment is part of the REGUPOL core mission. When it comes to how we conduct our business and develop our products, we think long term. We ask ourselves: How will our actions today impact tomorrow's world? We strive to protect and sustain our environment every step of the way, from development and production to customer use and disposal.

On the road, tires eventually wear down or sustain irreparable damage. But, in the environment, tires can last forever. They are nonbiodegradable, unable to be compacted like plastic or metal, and maintain their shape. Because of their sheer size and impenetrable rubber compound, tires are among the most problematic sources of waste we face today.

Each year we reclaim over 9 million tires (or 90,000 tons of SBR) from landfills to make environmentally sound solutions for the sports, acoustics, commercial, construction, and transportation markets. Our products are comprised of either shredded and cleaned SBR tire rubber (100% post-consumer waste) or a combination of SBR tire rubber and vibrant EPDM (post-industrial waste) color granules. The recycled content ranges from 75% to 100% recycled materials.

We understand that sustainability is not only about material content, which is why our manufacturing facility is near our rubber supplier. By eliminating excessive fuel use created through transportation of resources, fossil fuel expenditures are minimized, and atmospheric damage reduced. We are practically a zero-waste manufacturer regrinding our scrap material for use in some of our products.

There is an increasing demand for honesty and transparency from manufacturers. We were the first Pennsylvania manufacturer to be GreenCircle Certified. They provide independent verification of our products annually to ensure the legitimacy of our recycled content claims. But our commitment to sustainability does not end there; we've gone one step further. We work with UL Environment to independently certify our Environmental Product Declaration (EPD) to better understand and communicate the sustainable qualities and the life-cycle impact of our products.

Products used in the built environment should meet specific criteria for the health and safety of all occupants. These are called Health Product Declarations (HPDs) and are the standardized way of reporting the contents of building products. It is a valuable tool for not only encouraging transparency, it creates a sense of brand trust and is safer for anyone using the property. We make HPDs readily available for our family of brands including aktiv, sonus, and Revolution.

We are active USGBC members and our products can potentially assist architects and designers in earning points under 2 out of 9 categories—Materials and Resources and Indoor Environmental Quality—of LEED certification v4.1.





700

Employees

11

Locations worldwide

90,000

Tons of high quality rubber per year

132

Countries served worldwide



HOW DO YOU GROW TO THE TOP? **TOGETHER**

When you partner with REGUPOL, you become part of a community with a shared goal of leading with excellence and innovation. Our path to success has always been rooted in product innovation and great service, with an eye on the future. We transform over 90,000 tons of high-quality rubber every year to create products that meet and exceed industry standards.

Over the course of our 65-year journey to become a leader in our category of building materials, we have built up a wealth of expertise and forged long-term customer partnerships in 132 countries worldwide—like sprint legend Usain Bolt, who made history on our blue **REGUPOL** running track in Berlin's Olympic Stadium in 2009 when he set two world records.

“There's nothing like running on REGUPOL. To me, REGUPOL equals gold. In more ways than one.” – Usain Bolt

We've got it covered.



REGUPOL America LLC

11 Ritter Way
Lebanon, PA 17042
phone +1 800 537 8737
info@REGUPOL.com

REGUPOL BSW GmbH

REGUPOL Australia Pty. Ltd.

REGUPOL Acoustics Middle East FZE

REGUPOL Schweiz AG

REGUPOL Zebra Athletics LLC

BSW Shanghai CO. LTD.

REGUPOL.us

©2020 REGUPOL America LLC | 11 Ritter Way Lebanon, PA 17042
REGUPOL is a registered trademark of REGUPOL BSW GmbH