

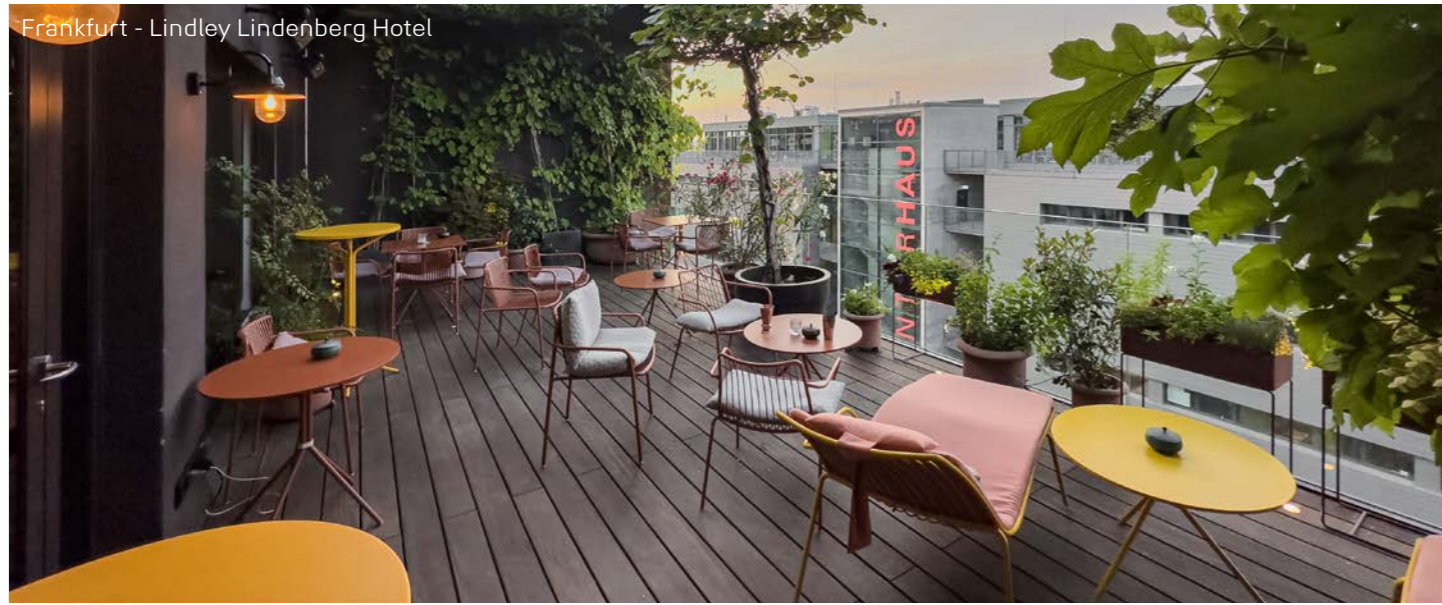
APPLICATION BROCHURE

REGUPOL SOUND AND DRAIN 22

Impact sound insulation
for terraces and
roof areas

Munich - NEO

Frankfurt - Lindley Lindenberg Hotel



Ischgl - Silvretta Therme

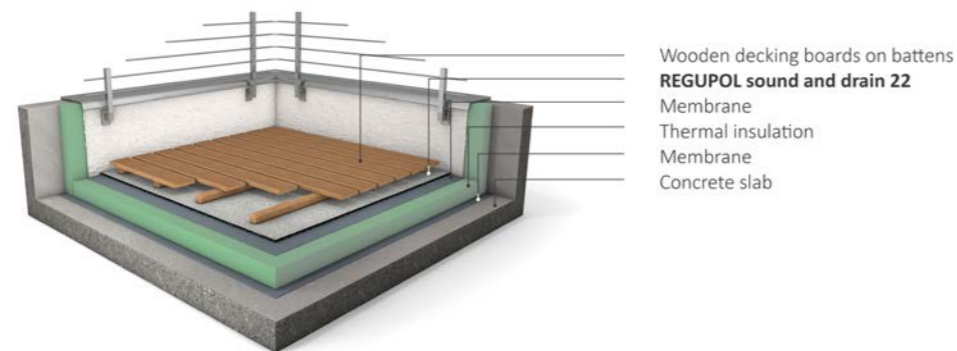


IMPACT SOUND INSULATION FOR OUTDOOR AREAS

Roof terraces are increasingly becoming popular meeting places. Cleverly designed and soundproofed, they are attractive for tenants, hotels, restaurants and other modern concepts.

A sky lounge with a starry sky or an XXL BBQ in a fashionable restaurant – hotel rooftops and urban rooftop gardens are all the rage around the world. Adequate noise protection is important for the planning and implementation of these meeting places so that their use does not interfere with life or work.

REGUPOL sound and drain 22 has been developed for this application.



REGUPOL SOUND AND DRAIN 22

REGUPOL sound and drain 22 impact sound insulation, which has been awarded the European CE mark and tested in accordance with DIN EN ISO standards, offers you tested protection of the waterproofing and drainage function in various balcony and terrace constructions.

REGUPOL sound and drain 22 is a versatile, 15 mm thick impact sound insulation layer with a profiled underside and low dynamic stiffness of $s'_t \leq 21 \text{ MN/m}^3$.

Depending on the construction, the impact sound reduction is between $\Delta L_w \geq 28 \text{ dB}$ and $\Delta L_w \geq 37 \text{ dB}$.

REGUPOL sound and drain 22 is designed for outdoor areas and subject to the internal and external surveillance plans of European Technical Assessment 18/0239.



Vienna - Aron Mencer Campus



REGUPOL SOUND AND DRAIN 22 IN SOLID TIMBER CONSTRUCTION

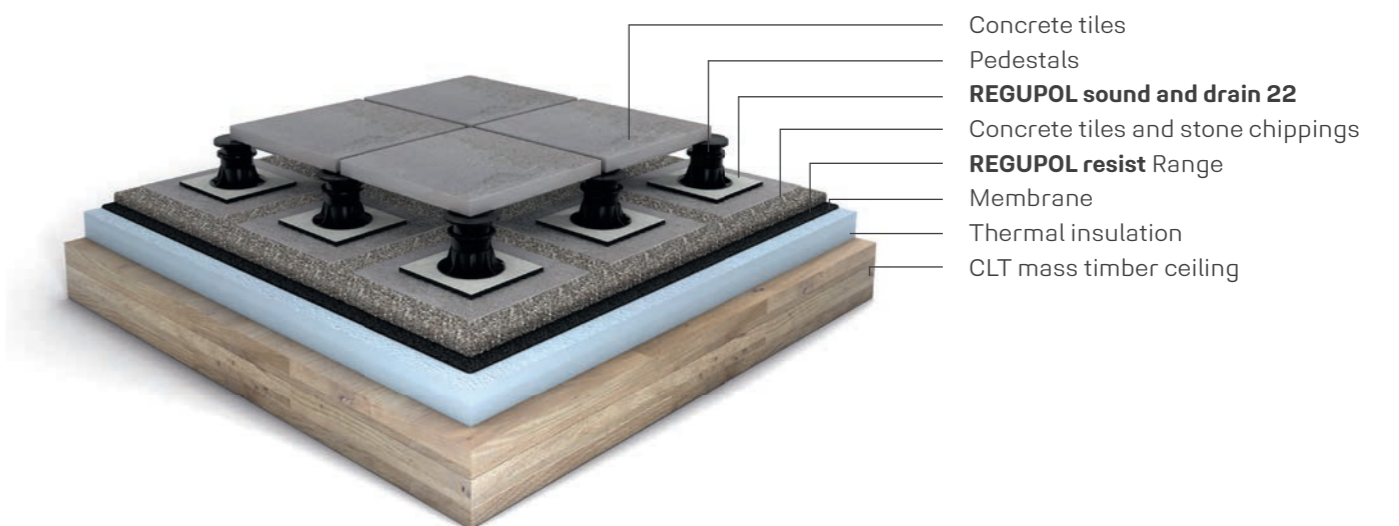
Solid timber construction requires a coordinated interplay of mass and spring above the solid timber element.

In order to meet the highest possible sound insulation requirements, a structure with additional mass is required in the form of heavy paving slabs laid on **REGUPOL sound and drain 22**. An additional, mass-increasing layer is placed under the impact sound insulation.

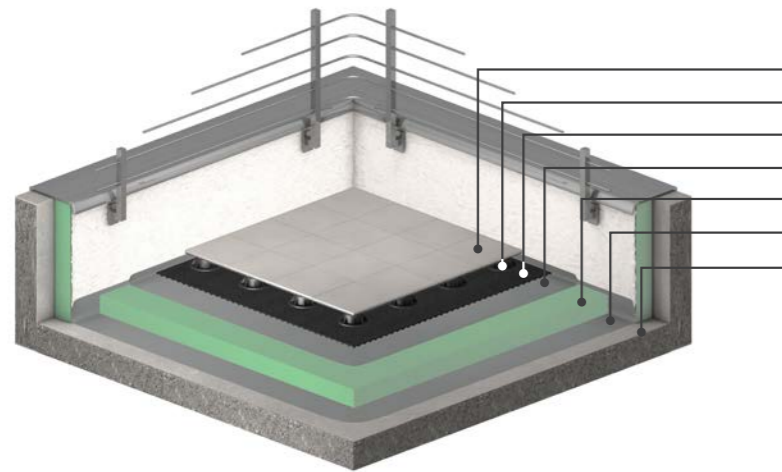
In a test set-up, acoustically measured at the Austrian laboratory "Holzbauforschung Austria", an excellent result was measured for low frequencies:

$$L_{n,w}(C_{1,50-2500}) = 41 (+3) \text{ dB}$$

Vienna - Seestadt Aspern Campus



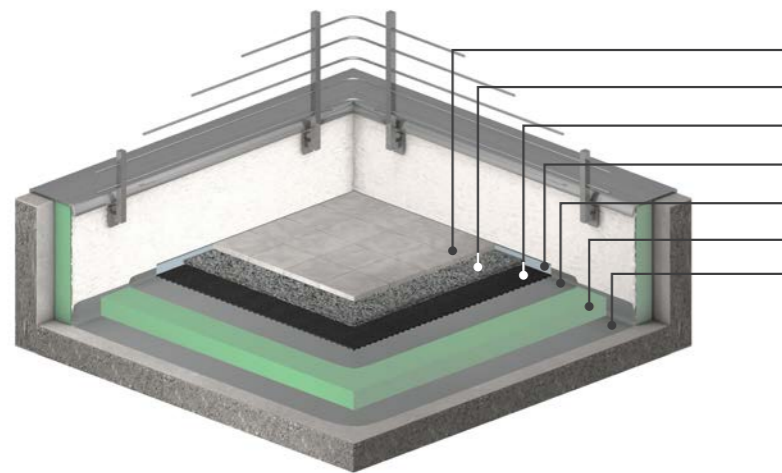
POSSIBLE BUILD-UPS FOR REGUPOL SOUND AND DRAIN 22



Concrete tiles on pedestals

- Concrete tiles
- Pedestals
- REGUPOL sound and drain 22**
- Membrane
- Thermal insulation
- Membrane
- Concrete slab

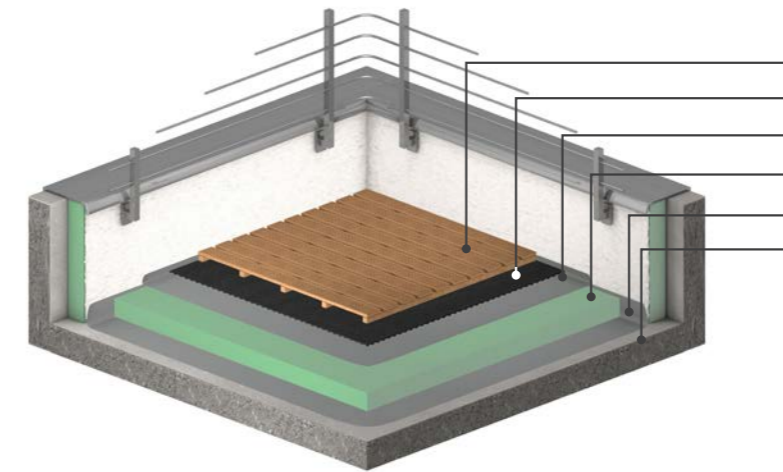
$\Delta L_w \geq 37 \text{ dB}$



Concrete tiles on stone chippings

- Concrete tiles
- Stone chippings 40 mm (2/8)
- REGUPOL sound and drain 22**
- Perimeter isolation strip
- Membrane
- Thermal insulation
- Membrane

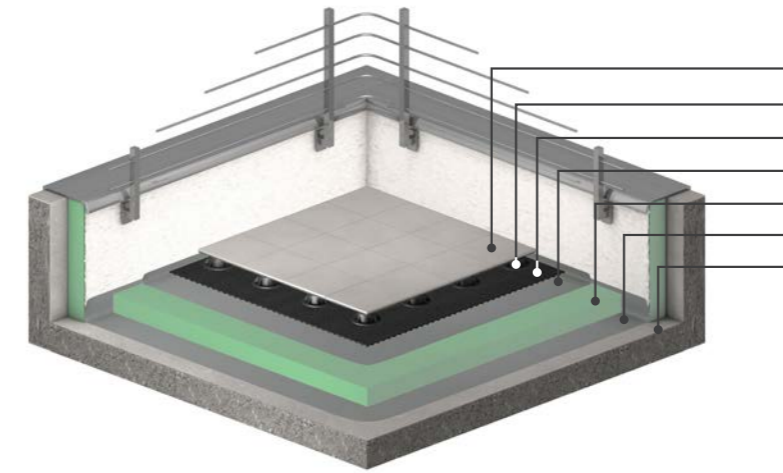
$\Delta L_w \geq 35 \text{ dB}$



Wooden decking boards on battens

- Wooden decking boards on battens
- REGUPOL sound and drain 22**
- Membrane
- Thermal insulation
- Membrane
- Concrete slab

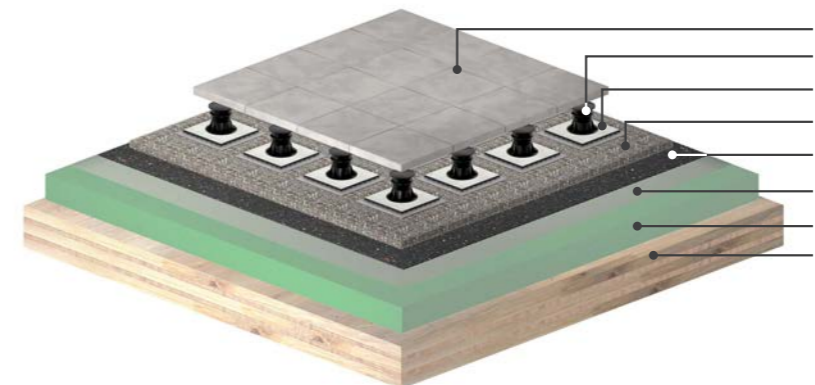
$\Delta L_w \geq 30 \text{ dB}$



Ceramic tiles on pedestals

- Ceramic tiles
- Pedestals
- REGUPOL sound and drain 22**
- Membrane
- Thermal insulation
- Membrane
- Concrete slab

$\Delta L_w \geq 35 \text{ dB}$



Concrete tiles on pedestals and mass timber ceiling

- Concrete tiles
- Pedestals
- REGUPOL sound and drain 22**
- Concrete tiles and stone chippings
- REGUPOL resist Range**
- Membrane
- Thermal insulation
- CLT mass timber ceiling

$L_{n,w} (C_{1,50-2500}) = 41 (+3) \text{ dB}$

Detailed technical data, declarations of performance and specifications can be found at acoustics.regupol.com

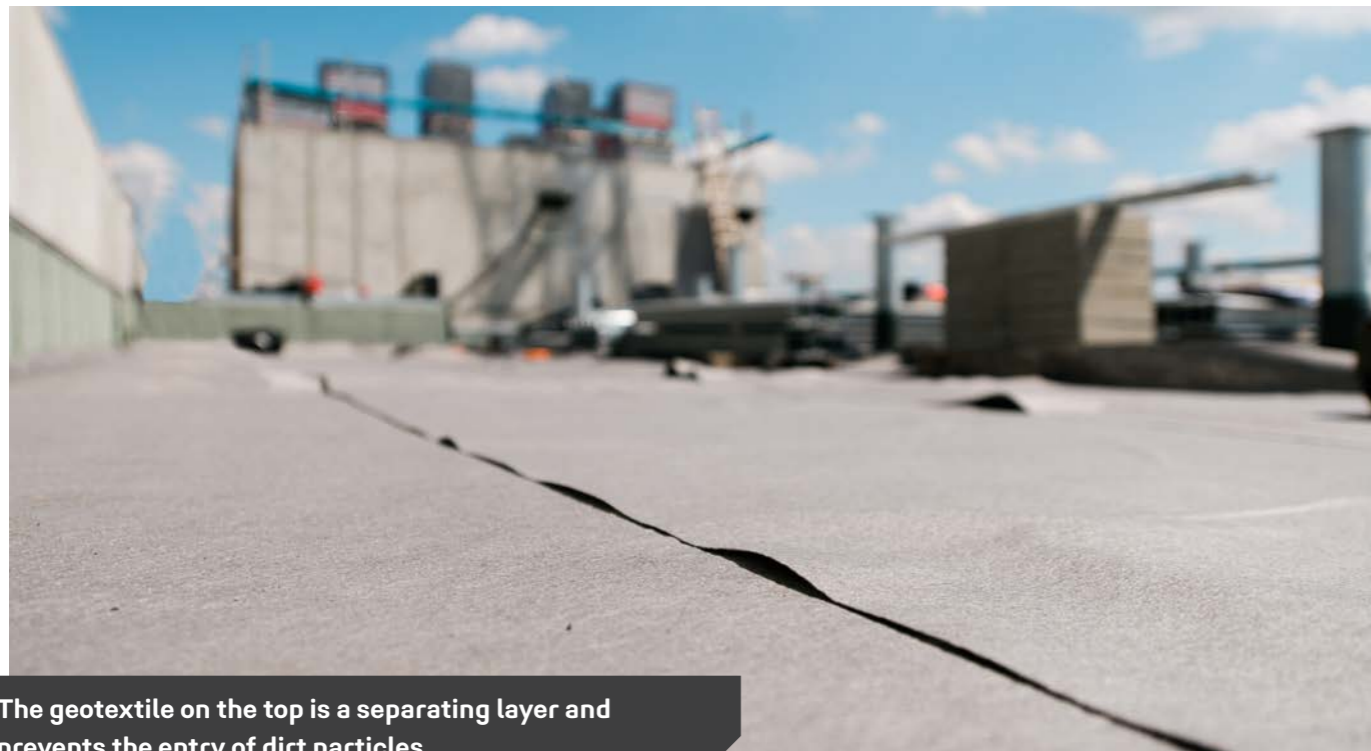
PRODUCT AND INSTALLATION INSTRUCTIONS FOR **REGUPOL SOUND AND DRAIN 22**



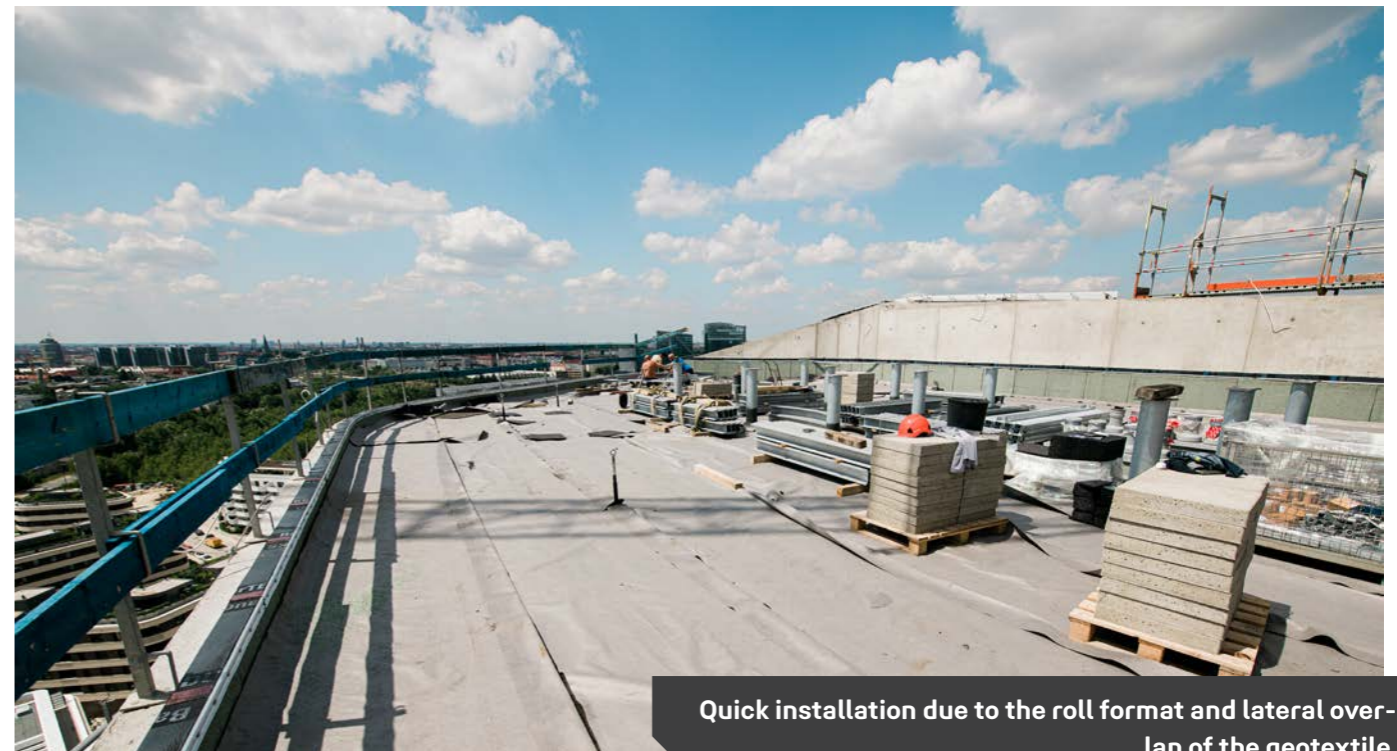
The profiling on the underside is used for drainage and impact sound insulation.



Standard delivery format: length 10,000 mm, width 1,250 mm, thickness 15 mm



The geotextile on the top is a separating layer and prevents the entry of dirt particles.



Quick installation due to the roll format and lateral overlap of the geotextile.



HOW DO WE OPERATE MORE SUSTAINABLY? TOGETHER.

Circular economy for **REGUPOL** had its beginnings in the company's establishment in 1954, when PUR foam from the furniture industry got a second life. The manufacturing process of the upholstery produced considerable quantities of material off-cuts which in turn were processed to new composite foam products - a new business idea was born. **REGUPOL** is therefore a pioneer of the circular economy and has the basic idea of recycling in its DNA. Our company has grown steadily ever since. New products were devel-

oped, new subsidiaries were established, for example in Australia and America, and new production sites were set up. **REGUPOL** is still a family business today. The third and fourth generations are currently managing the company. Since the company's inception, we have employed creative, dedicated and highly motivated people who use their expertise to provide the right solutions for our customers. We are proud of that!

How sustainable are REGUPOL products?

The circular economy works when products based on it can compete directly with new products—and we have been proving this since 1954. **REGUPOL** products are generally made from 75–95% recycled raw materials.

What standards and legal requirements does REGUPOL meet?

The company has been DIN EN ISO 14001 certified since 1997 and will continue to maintain this certification. We are also DIN EN ISO 45001, DIN EN ISO 9001 and DIN EN ISO 50001 certified.

In addition, our products and mats comply with the new § 45 II No. 2 of the German Circular Economy Act. We hope that the clearly formulated regulation will help to make government action more sustainable. By recycling our packaging materials at Interseroh Zero Waste Solu-

tions, more than 34,000 tons of greenhouse gases can be saved.

A milestone for the future: Cradle to Cradle Certified® Bronze

We have successfully obtained Cradle to Cradle Certified® Bronze certification for acoustic, building protection and load-securing products. Cradle to Cradle Certified® is a registered trademark of the Cradle to Cradle Product Innovation Institute (C2CPII).



Find out more about our certification in our video.

90,000
tonnes of recycled elastomers per year

95 % maximum recycling rate

60 % export ratio

REGUPOL's carbon footprint

Our **carbon footprint** is calculated regularly. You can find the current footprint at: www.regupol.com



REGUPOL Germany GmbH & Co. KG

Am Hilgenacker 24
57319 Bad Berleburg
Tel.: +49 (0)2751 803-0
info@regupol.de

REGUPOL America LLC

REGUPOL Australia Pty. Ltd.

REGUPOL Acoustics Middle East FZE

REGUPOL Schweiz AG

REGUPOL Zebra Athletics LLC

BSW Shanghai CO. LTD.

www.regupol.com